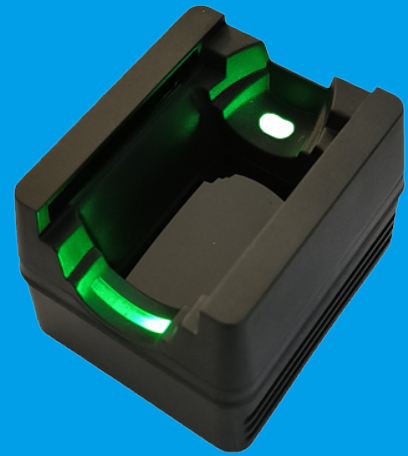


## CAMA-FVM2201P

### Finger Vein Recognition Module

- ✓ 500 Finger Vein User Capacity
- ✓ SDK for Embedded and Server Application
- ✓ Auto-Learning Function
- ✓ Support Touch Sensing Activation
- ✓ Support Both UART and USB Communication



CAMA-FVM2201 is an OEM finger vein module developed by CAMA Biometrics. It integrated optical sensor,MCU,finger vein recognition algorithm,flash memory all together. It can suit for variety of embedded and online authentication mangement applications.

### Product Features

- **500 Finger Vein Capacity**  
500 finger vein template can be stored
- **Auto-Learning Funcion**  
Improve finger vein Feature automatically
- **Uart and USB Interface**  
3.3V uart and 5V USB interface
- **SDK for Embedded and Server Application**  
Sample code and SDK for different system
- **Touch Sensing Activation Function**  
Module will be actived when finger close
- **Breathing LED Light for Indication**  
Breathing LED light make operation easier

### Applications

- ✓ Biometric Access Control
- ✓ Biometric Citizen Identity Authentication
- ✓ Biometric Time Attendance
- ✓ Desktop Enroll And Authentication Scanner

# Technical Specifications

PARAMETER	DESCRIPTION
Sensor Type	CMOS Sensor+ Infrared sensor
Product Size	48mm x 40mm x 29mm
MCU Parameters	144MHZ 32 bit RISC High Capability DSP Controller
Auto-Learning Function	Support
Fingerprint Template	1K Bytes
Communication Interface	UART (3.3V TTL); 5V USB Interface
FRR	<0.01% (Highest Security Level)
FAR	<0.001% (Highest Security Level)
Identification Speed	1:1<0.5s 1:N<1s
Fingerprint User Capacity	500 Finger Vein Templates
Touch Sensing Activation	Module will be actived when finger on scanner
Power Supply	Work Current<250mA Sleep Mode Current< 5 $\mu$ A
Breathing LED Light Mode	DC 3.3V $\pm$ 3%
Work Humidty	Support offline Breathing (SOC Sleeping Mode)
Security Level	Work Humidty:20%-80% Work Temperature:-20 $^{\circ}$ C- 60 $^{\circ}$ C
	Normal,High and Highest Three Level
Communication Parameters	Parity = NONE, One Stop Bit = 1 Flow Control = NONE BaudRate:9600, 19200, 38400, 57600, 115200 (bps) Default: 57600bps

## Shenzhen CAMA Biometrics Co., Ltd.

Address: No.801, Block 1B,Shenzhen International Innovation Valley,Dashi 1st road, Nanshan District, Shenzhen,China

Tel: 0086-755-33581519 Website: <https://www.camabio.com>